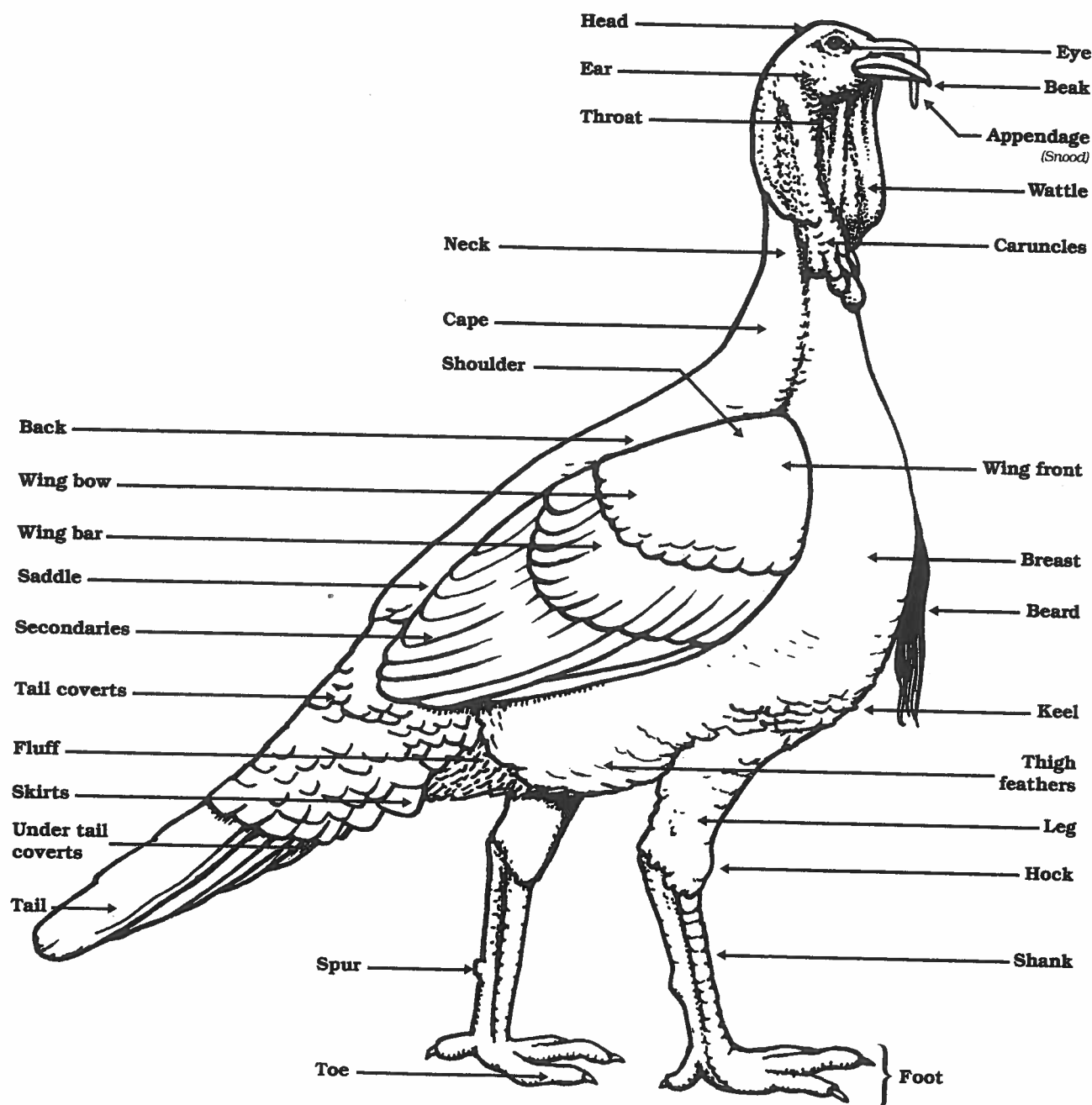


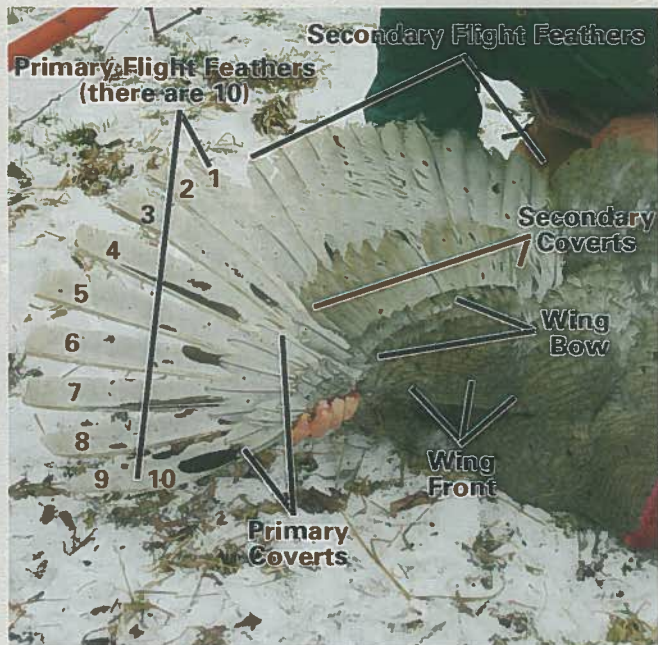
Use this poster in conjunction with **Anatomy: Match Part with Location** situation/task statement and **Parts of a Turkey** identification tags.

Parts of a Turkey



Turkey Head and Neck

Wing Feathers



Turkey Diseases Skillathon Study Sheet – All Ages

* Match 8 diseases with their symptoms: Avian Influenza, Blackhead, Blue Comb, Bumblefoot, Coccidiosis, Lice, Mites, Mycoplasma Gallisepticum

Disease Name	Symptom(s)
Avian Influenza	Coughing, Sneezing, Rales, Swelling of the face and/or wattles, Bluish-purple discoloration of the face, General diarrhea, Red or white spots on the legs and comb, Conjunctivitis
Blackhead	Drooping head and wings, prolonged standing, closed eyes, ruffled feathers, emaciation, and sulfur-colored droppings. 80-100% mortality
Blue Comb	Highly contagious, characterized by depression, anorexia, diarrhea, and decreased weight gain
Bumblefoot	Swollen footpads, black or brown scabs on bottom of foot, superficial lesion, rough abrasion, lameness
Coccidiosis	Bloody droppings, Diarrhea, Weight loss, Unthriftiness, Ruffled feathers, Chills, Huddling behavior, Increased likelihood of death
Lice	Lay their eggs on the birds' feathers, typically near the base of the feather shaft ,feed on dry skin scales, feathers, and scab
Mites	Most common external parasite on poultry, some are blood sucking and some live on dry skin scales
Mycoplasma Gallisepticum	Coughing, Sneezing, Shaking of the head, Rales, Gasping, Discharge from the eyes, Discharge from the nose, Swelling of the face and/or wattles, Retarded growth, General diarrhea