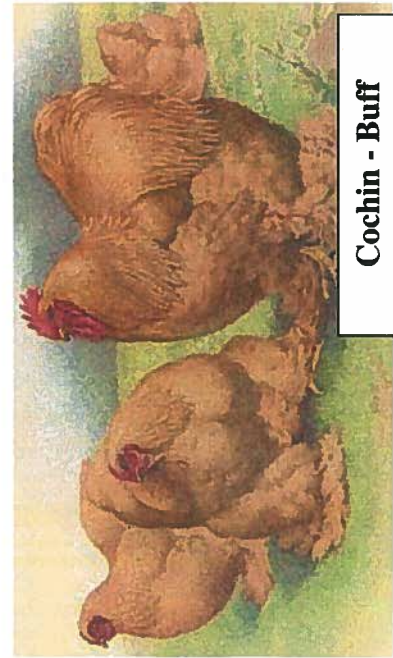
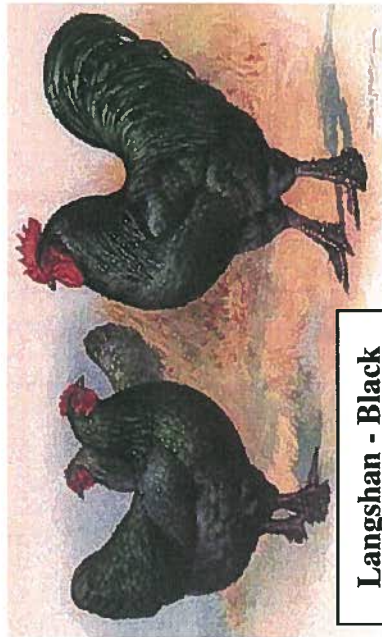


Chicken - Intermediate



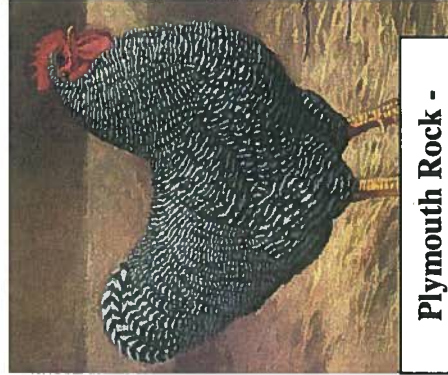
Cochin - Buff



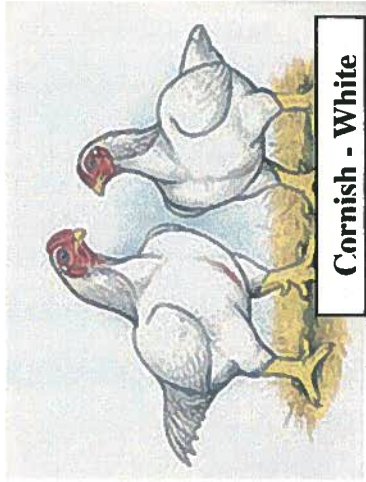
Langshan - Black



Leghorn - Single Comb White



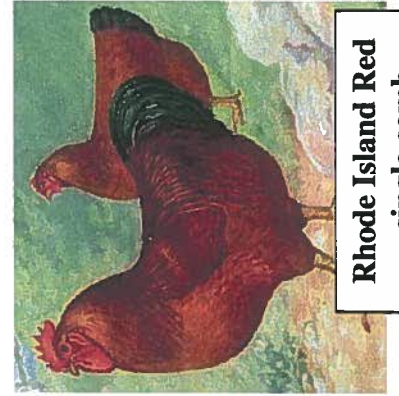
Plymouth Rock - Barred



Cornish - White



Brahma - Light



Rhode Island Red - single comb



Silkie - Bearded



Plymouth Rock - White



Old English Game - Black Breasted Red

Poultry Feed Tag Example

BROILER STARTER MEDICATED

COMPLETE FEED FOR STARTING BROILERS

For the prevention of coccidiosis in poultry flocks; growth promotion and feed efficiency, and improving pigmentation.

ACTIVE DRUG INGREDIENT

Nicarbazin 0.0125%
Bacitracin Methylene Disalicylate 50 G/TON
Roxarsone 0.005%) 45.4 G/TON

GUARANTEED ANALYSIS

CRUDE PROTEIN MINI 22.00%
LYSINE MIN 1.13%
METHIONINE MIN 0.54%
CRUDE FAT MIN 3.00%
CRUDE FIBER MAX 5.00%
CALCIUM MIN 0.75%
CALCIUM MAX 1.25%
PHOSPHORUS MIN 0.60%
SALT MIN 0.30%
SALT MAX 0.80%

INGREDIENTS

GRAIN PRODUCTS, PLANT PROTEIN PRODUCTS, ANIMAL PROTEIN PRODUCTS, HYDROLYZED ANIMAL AND VEGETABLE FAT, CALCIUM PHOSPHATE, GROUND Limestone, SALT, METHIONINE SUPPLEMENT, PROPIONIC ACID (ADDED TO RETARD MOLD GROWTH), VITAMIN A ACETATE, VITAMIN D-3 SUPPLEMENT, VITAMIN E SUPPLEMENT, MENADIONE DIMETHYLPYRIMIDINOL BISULPHITE, CHOLINE CHLORIDE, RIBOFLAVIN SUPPLEMENT, CALCIUM PANTOTHENATE, NIACIN, VITAMIN B-12 SUPPLEMENT, PYRIDOXINE HYDROCHLORIDE, THIAMINE MONONITRATE, FOLIC ACID, BIOTIN, ZINC OXIDE, MANGANOUS OXIDE, MANGANESE SULFATE, FERROUS SULFATE, COBALT CARBONATE, CALCIUM IODATE, SODIUM SELENITE.

FEEDING DIRECTIONS

For broilers and fryer chickens only, feed continuously as the sole ration.

SEE BACK OF TAG FOR WARNING

MANUFACTURED BY:
SKILLATHON FEEDS

NET WEIGHT 50 POUNDS (22.7 KILOGRAMS)
OR AS SHOWN ON WHIPPING DOCUMENT

WARNING

Do not feed to laying hens. Withdraw 5 days before slaughter. Use as the sole source of organic arsenic. Feed continuously as the sole ration from time the chicks are placed on litter until past the time when coccidiosis is ordinarily a hazard; do not use as a treatment for coccidiosis; do not use in flushing mashers.

DO NOT FEED TO CATTLE OR OTHER RUMINANTS.

Chicken Diseases Skillathon Study Sheet - Intermediates

Match 8 diseases with their symptoms: Avian Influenza, Bumblefoot, Coccidiosis, Fowl Pox, Marek's Disease, Mycoplasma Gallisepticum, Lice & Mites, Pullorum

Disease Name	Symptom(s)
Avian Influenza	Coughing, Sneezing, Rales, Swelling of the face and/or wattles, Bluish-purple discoloration of the face, General diarrhea, Red or white spots on the legs and comb, Conjunctivitis
Bumblefoot	Swollen footpads, black or brown scabs on bottom of foot, superficial lesion, rough abrasion, lameness
Coccidiosis	Bloody droppings, Diarrhea, Weight loss, Unthriftiness, Ruffled feathers, Chills, Huddling behavior, Increased likelihood of death
Fowl Pox	Coughing, Sneezing, Rales, Gasping, Discharge from the eyes, Retarded growth, Warts or scabs
Marek's Disease	Unilateral paralysis of the wing or leg, Lameness, Unthriftiness, Gray eyes and blindness
Mycoplasma Gallisepticum	Coughing, Sneezing, Shaking of the head, Rales, Gasping, Discharge from the eyes, Discharge from the nose, Swelling of the face and/or wattles, Retarded growth, General diarrhea, Prostration
Lice & Mites	Common external parasites, Blood-suckers or live on dry skin scales, feathers or scabs on the skin
Pullorum	Caused by Salmonella bacteria, huddling behavior, weak, depressed, white diarrhea, white fecal material pasted to the vent area